

Allegany County  
Hazard Mitigation Plan  
ArcGIS Online Tutorial

## 1. Accessing the ArcGIS Online Webmap:

Select the appropriate Webmap for your District:

District I: <https://experience.arcgis.com/experience/d2327518dcc44051813a73f883a09338>

District II: <https://experience.arcgis.com/experience/ffc6969e54e4a84b75f9f5e1939bb75>

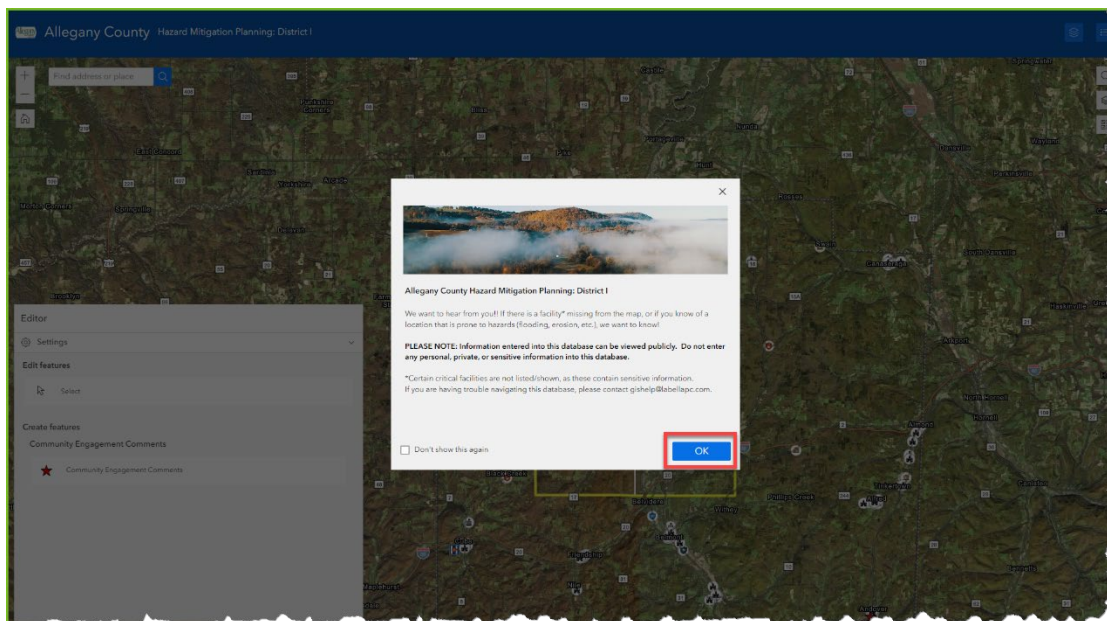
District III: <https://experience.arcgis.com/experience/3ee17046c88f4813b1a77c1d28bf8a8e>

District IV: <https://experience.arcgis.com/experience/2b88f82648c646dbb04cd529f1dc6c4b>

District V: <https://experience.arcgis.com/experience/b7c1bd44f392494a876ee5215262d501>

The user will see a “Welcome Splash Screen” with some important notes about the site.

Click “OK” to continue.



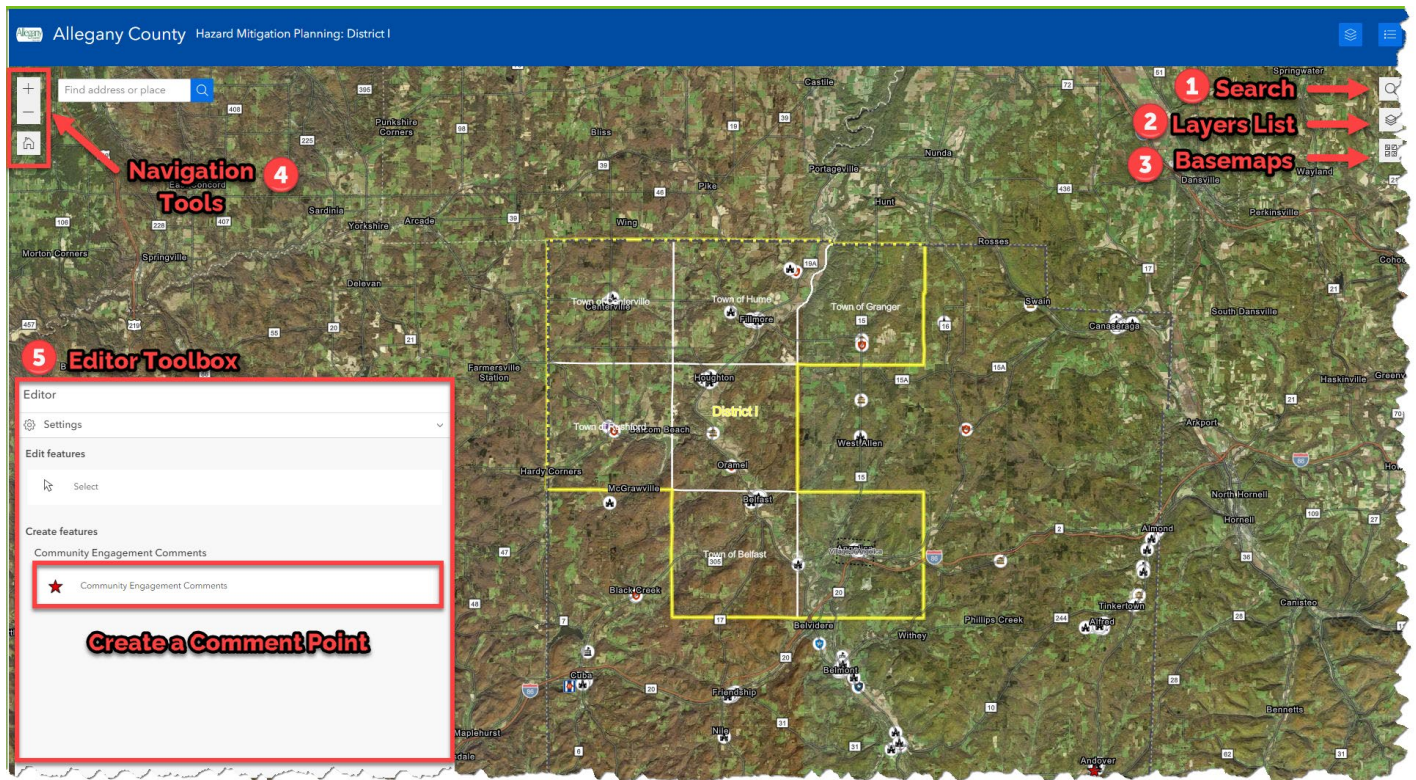


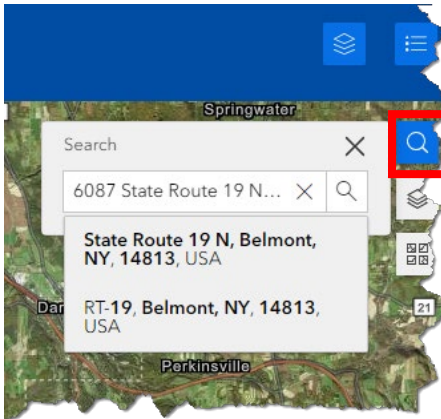
## 2. Navigating the webmap:

There are many tools to help the user navigate the Webmap. These include:

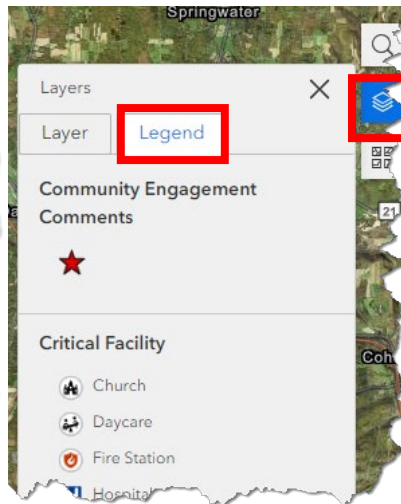
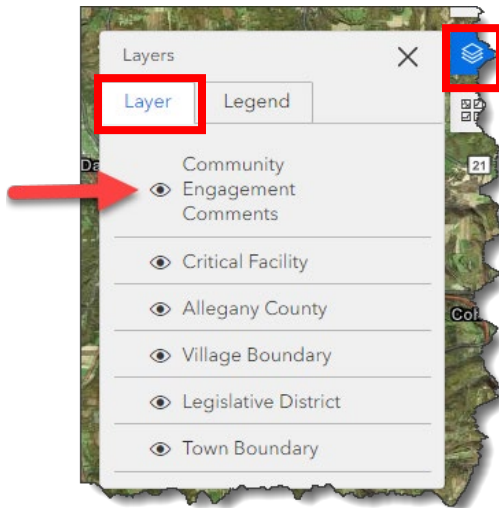
1. Search
2. Layer List and Legend
3. Basemaps
4. Navigation\* (zoom in, zoom out, and “return home”) tools
5. Editor Toolbox

\*Note: The user can also zoom by using the mouse wheel. Push the mouse wheel forward to “zoom in”. Pull the mouse wheel back to “zoom out”. To “pan” the map, click and hold the left mouse button down and “drag”.



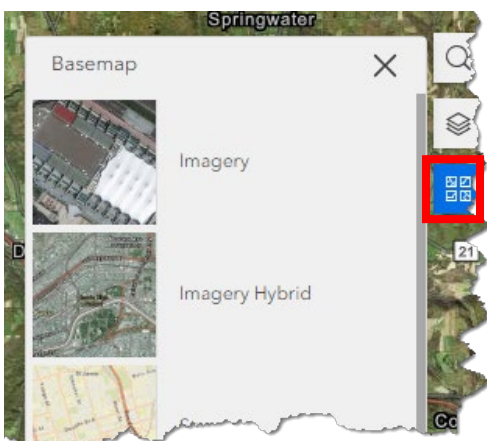


Type an address into the Search bar. Once an address has been selected, the map will automatically zoom to the location.



The Layer & Legend tabs show the user what layers are in the map. Turn layers on and off by checking/un-checking them in the Layer List.

Tap on the Legend tab to view the symbols that correspond with the features.



The Basemap tool allows the user to change the basemap style of the map. The Webmap is displaying aerial photography by default, however there are many other basemap styles that can be used (topographic, navigation, terrain with labels, etc.).

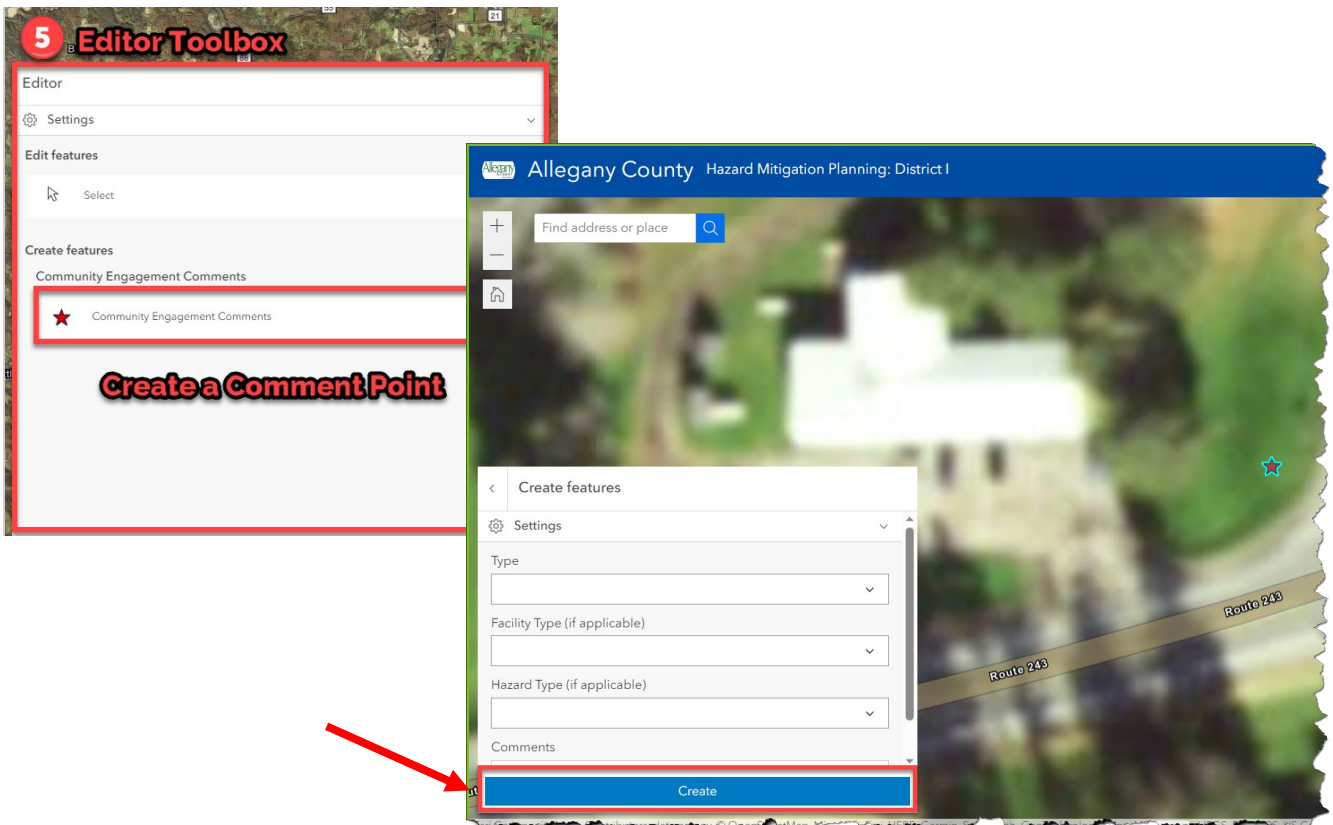


### 3. Creating a Feature:

Please keep in mind that your comments and pins will be viewable to the public. Do not share any sensitive or personal information on this website.

To place a “pin” on the map (perhaps there is an area that floods frequently that you’d like to mark), zoom/pan to the location, and

1. Click on the “Community Engagement Comments” layer in the Editor Toolbox. You will see that your cursor turns into a “star”.
2. Click on the map to mark a spot on the map.



Add information about the location:

1. What **Type** of feature is it? Critical Facility? Hazard Spot? Or something else (miscellaneous)?
2. If it is a facility, What **Facility Type** is it?
3. If it is a hazard, what **Type of Hazard** is it?
4. Include any additional **comments** about the location.

To complete the process, click on the “Create” button. Your “pin” has now been recorded.

Repeat this process as many times as necessary.



#### 4. Closing the Map:

Once you are done working in the map, the user can simple close their web browser. All “pins” are saved as soon as the “Create” button is selected.

If you are having trouble navigating this database, please contact [gishelp@labellapc.com](mailto:gishelp@labellapc.com).